



## Pegasus Wireless Products, LLC

M2M - Hardware, Software, Worldwide Connectivity Services

Ph: 678-910-5739

Email: [Info@pegasuswirelessproducts.com](mailto:Info@pegasuswirelessproducts.com)

### Overview / What We Can Do:

#### Hardware

Standard Products  
Customized Designs

#### Software

Product Software Design  
Software Design Assistance  
Web Portal Design  
Web Portal Hosting

#### Manufacturing Services

Build customer existing designs

#### Connectivity

SIM Cards 2FF  
eSIMS  
Carrier Service Worldwide  
Service Management Platforms

#### Support Components

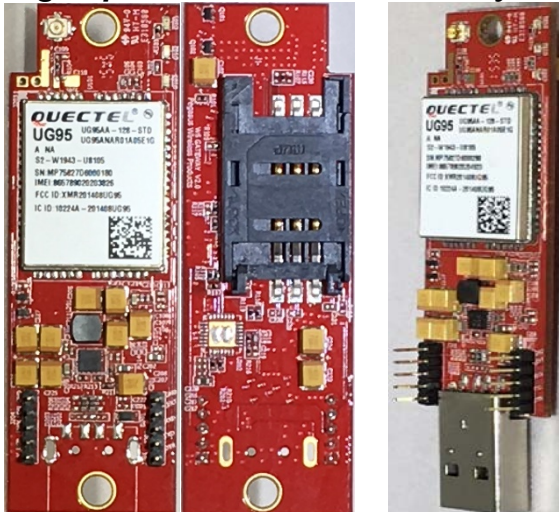
Antennas (Standard & Custom),  
Cables, and Power Supplies

#### Reporting

Backend Hosting  
Metrics Reporting

### PWP-GW-W95-A

**USB or UART Adaptor for UMTS/HSPA  
High-speed Wireless Connectivity**



#### Key Features

- Embedded SIM Card support (One)
- GSM/GPRS Quad-band/EDGE/UMTS/HSPA for worldwide coverage
- Jamming detection.
- LBS global cell-ID location
- Geo fencing control
- Movement alert sensor by 3D accelerator (Optional)
- GSM Antenna built-in
- GPIO input/ Output (Optional)
- Wide operating temperature range

### PWP-MINITRACK-XX-W-X

**GPS / GSM/EDGE/GPRS/UMTS/HSPA /  
SMS**



#### Key Features

- Embedded SIM Card support (One)
- GSM/GPRS Quad-band/EDGE/UMTS/HSPA for worldwide coverage
- Jamming detection.
- LBS global cell-ID location
- Geo fencing control
- Movement alert sensor by 3D accelerator (Optional)
- GSM Antenna built-in
- GPS Antenna built-in
- GPIO input/ Output (Optional)
- Wide operating temperature range
- 850 mAh Li-ion backup battery. (Optional)
- Bluetooth capable



## Pegasus Wireless Products, LLC

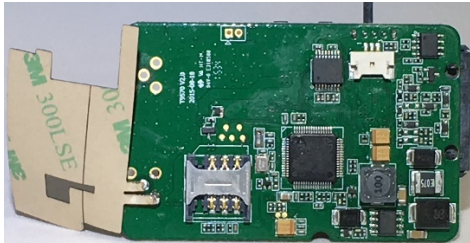
M2M - Hardware, Software, Worldwide Connectivity Services

Ph: 678-910-5739

Email: [Info@pegasuswirelessproducts.com](mailto:Info@pegasuswirelessproducts.com)

### PWP-T95-W95-A

**GPS / GSM/EDGE/GPRS/UMTS/HSPA / SMS with Sensor inputs**



#### Key Features

- One Micro SIM Card support
- GSM/GPRS Quad-band/EDGE/UMTS/HSPA for worldwide coverage
- Jamming detection.
- LBS global cell-ID location
- Geo fencing control
- Movement alert sensor - 3D accelerator
- GSM Internal Antenna embedded
- GSM External Antenna option
- GPS Internal Antenna embedded
- GPS External Antenna option
- Power/oil flow control from Service Center
- GPIO Input/Output(details as below table)
- ACC detect
- High range power supply up to 50V
- Wide operating temperature range
- Ultra low power consumption
- +3000 location information storable
- Dimensions: 74\* 50 \*21.6 mm
- 450 mAh Li-ion backup battery

### Connectivity Service & SIMs



#### Service

EMnify is uniquely positioned to meet the wide-ranging needs of MNOs, MVNx, Resellers, System Integrators and Enterprises.

We empower them to launch, manage and monetize IoT and M2M connectivity services efficiently from a single point of contact using a single service contract.

Designed to offer unmatched flexibility, the EMnify Platform helps customers to tap the potential of growing M2M and IoT business and create new revenue streams.



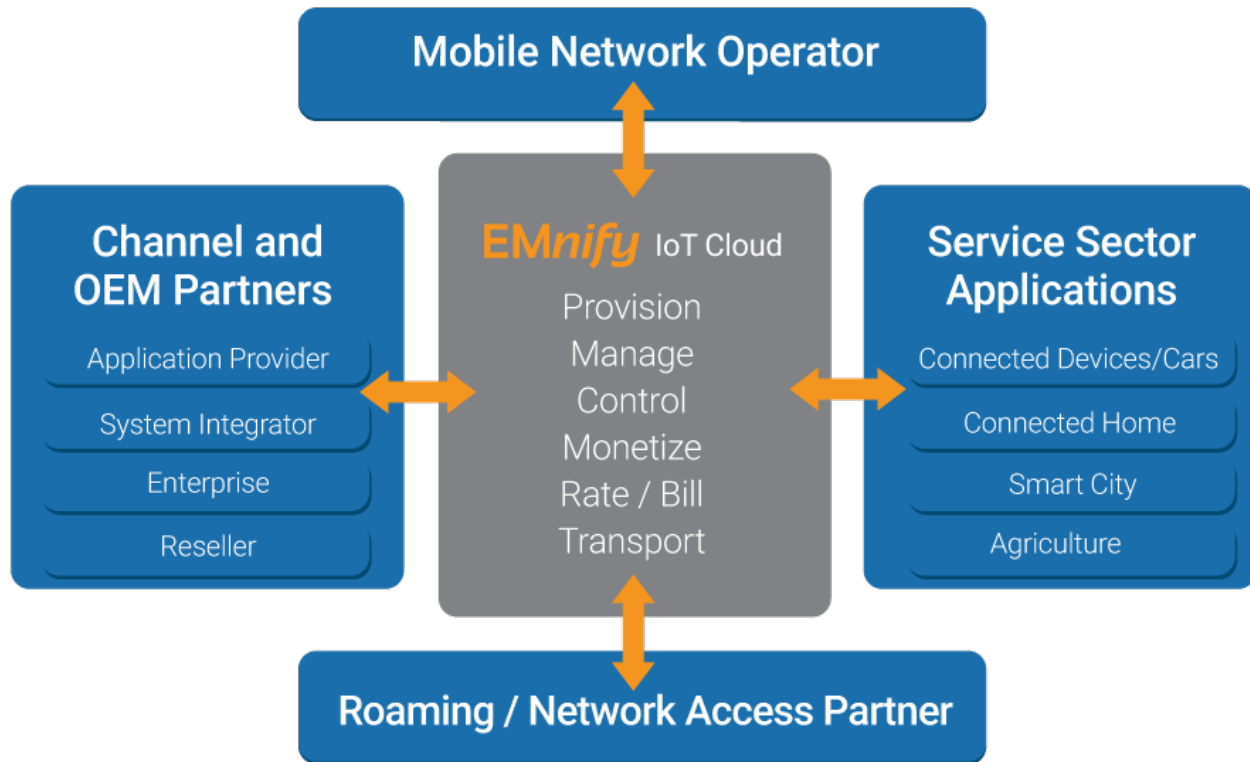
## **Pegasus Wireless Products, LLC**

M2M - Hardware, Software, Worldwide Connectivity Services

Ph: 678-910-5739

Email: [Info@pegasuswirelessproducts.com](mailto:Info@pegasuswirelessproducts.com)

### **Enabling The IoT Connectivity Eco System**



## **Technology**

Technology that changes the way you do business

### **Network Functions Virtualization (NFV)**

The architecture of the EMnify platform follows the concept of NFV and virtualizes the entire core network functions of a mobile network. It is designed for public/private cloud environments and can run on OpenStack, VMware and even AWS. This technology enables auto-scaling of system and network resources based on real-time subscriber activity. The whole infrastructure is auto-deployed and automatic provisioned including network access, routers, VPN gateways, firewalls, applications and services.

### **Software-defined Networking (SDN)**

All components of the EMnify M2M connectivity stack follow the SDN approach that makes it highly flexible in terms of possible network flows and dynamic reconfiguration due to abstraction of lower-level functionality. It has a clear design with independent control and data plane, where EMnify has invented a new highly efficient communication protocol between the control plane, the data plane and the application level. As a result, our systems can build a globally scalable network setup with central, regional or domestic data planes or combinations of it while keeping 100% routing and policy consistency.



## Pegasus Wireless Products, LLC

M2M - Hardware, Software, Worldwide Connectivity Services

Ph: 678-910-5739

Email: [Info@pegasuswirelessproducts.com](mailto:Info@pegasuswirelessproducts.com)

### User-defined networking (UDN)



Users of the EMnify IoT Cloud create on-demand their own virtual mobile networks for their mobile devices with full control over the network layout, service & security policies and tariff profiles. Therefore mobile connectivity is no longer bound to predefined user profiles or dedicated home networks.

### SIM Technology

EMnify's advanced SIM technology provides over-the-air (OTA) provisioning and management of subscription profiles. Over the life-time of a M2M SIM instant reconfiguration capabilities and the dynamic use of multiple identities enable efficient and sustainable use of global network coverage. The EMnify solution supports all classic form-factors as well as Embedded SIM deployments (eUICC).

The SIMs are available in Plug-in (2FF) and Surface Mounted Device (MFF2) form factors.

These form factors are compliant with ISO 7816 part 1 general requirements and the specific requirements defined in ETSI TS 102 221 (2FF) and ETSI TS 102 671 (MFF2).

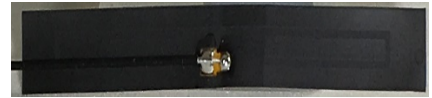
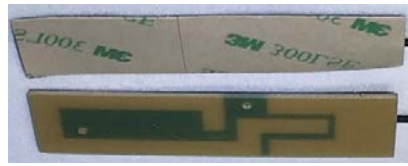
SIM Plug-in form factor (2FF)	eSIM in Surface Mount Device (MFF2)
	
<ul style="list-style-type: none"><li>☒ Plug form factor (delivered in ID-1 Carrier)</li><li>☒ M5 robust contact plate<ul style="list-style-type: none"><li>• DIM Industrial<ul style="list-style-type: none"><li>- Enhanced module materials</li><li>- Reinforced plastic (PETF/PC/PETF)</li></ul></li><li>• SIM Commercial<ul style="list-style-type: none"><li>- Regular plastic (PVC-ABS)</li></ul></li></ul></li><li>☒ Dimensions defined by ETSI TS 102 221</li></ul>	<ul style="list-style-type: none"><li>☒ SMD form factor (Surface mounted Device)</li><li>☒ High robustness to stringent environment</li><li>☒ High integration (end-device assembly)</li><li>☒ Fits in high throughput assembly processes</li><li>☒ Dimensions defined by ETSI TS 102 671</li></ul>

Accessories: (Antenna, Cables Sensors)



**Pegasus Wireless Products, LLC**  
M2M - Hardware, Software, Worldwide Connectivity Services  
Ph: 678-910-5739 Email: [Info@pegasuswirelessproducts.com](mailto:Info@pegasuswirelessproducts.com)

## Antenna -Standard and Custom Designed



## Cables:



## Humidity/Temp Sensor:

