

ADAM TECH

Adam Technologies, Inc.

ADVANCED INTERCONNECT PRODUCTS AND SYSTEMS

CHINA • TAIWAN • USA • DEUTSCHLAND

info@adam-tech.com • www.adam-tech.com

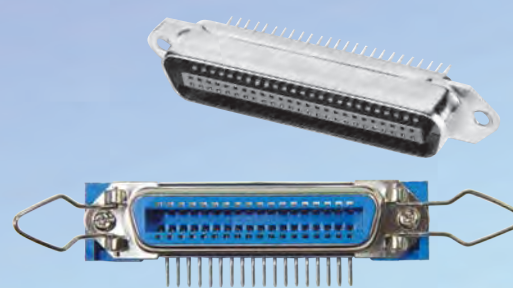
DVI CONNECTOR

- Digital & Analog versions.
- Straight and Right Angle PCB mount.
- High Speed performance and low cost.
- Single or Dual Stacked.



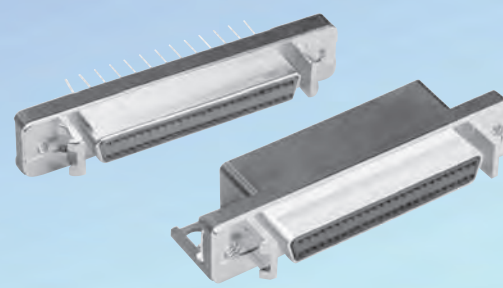
CENTRONICS / MINIATURE RIBBON CONNECTORS

- Straight pin or Right Angle pin PCB mount.
- Solder cup, Flat Cable IDC versions.
- 14P, 24P, 36P & 50P.
- Multiple panel and PCB mounting options.



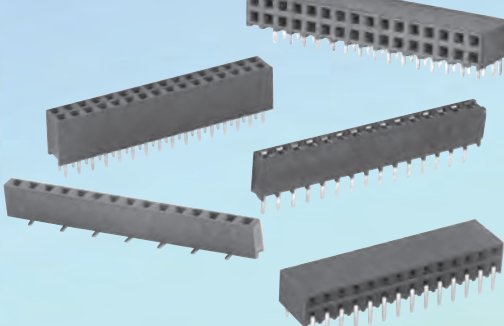
1.27mm SCSI II/III RIGHT ANGLE

- Right Angle & Vertical mount
- 20P – 120P, Metal EMI protection front shell
- Multiple Panel and PCB mounting options



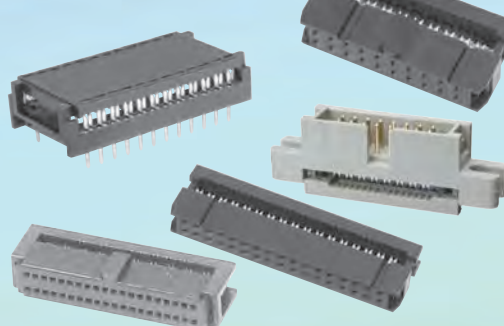
RECEPTACLE STRIPS

- Many Pitches including:
 - 0.8, 1.0, 1.27, 2.0, 2.54, 3.96mm
- Straight, Right Angle
- Thru-hole & SMT



IDC CONNECTORS

- 1.27, 2.00, 2.54mm Pitches
- 8P – 100P
- Dual Row Sockets, PCB Plugs
- Card edge, D-Subminiatures



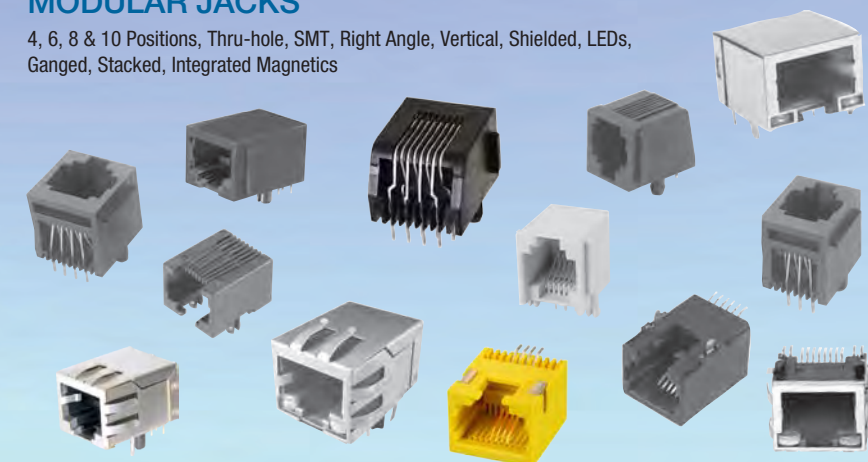
AC INLET & OUTLET POWER CONNECTORS

- Solder, Quick connect or PCB pin mount
- Inlet & Outlets with Power Line Filters
- Snap in or Screw in Flange Mount
- Fuse & Fuse with Switch versions
- IEC & Mini-IEC types
- IEC-60320, CEE-22 Compliant

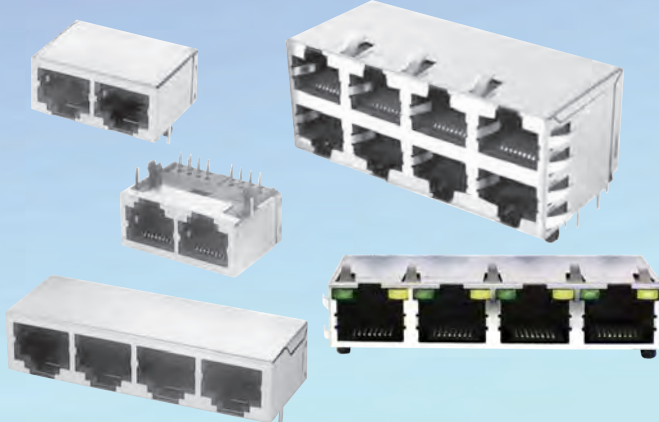


MODULAR JACKS

4, 6, 8 & 10 Positions, Thru-hole, SMT, Right Angle, Vertical, Shielded, LEDs, Ganged, Stacked, Integrated Magnetics



MODULAR JACKS, GANGED & STACKED



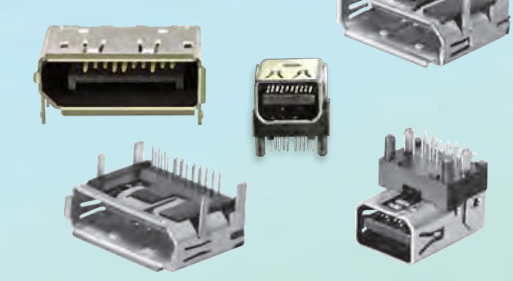
USB, MINI-USB, MICRO USB & FIREWIRE, MINI-FIREWIRE

- USB 2.0 & 3.0 Standard, Mini & Mirco versions.
- Types A, AB, AB1, B, B4 & B5.
- Firewire & Mini Firewire styles.
- Thru-hole, SMT, Stacked versions.



DISPLAY PORT & MINI-DISPLAY PORT

- High band width digital interface.
- Small package, shielded design.
- Supports color depth 6,8,10,12, 16 bits per color components.



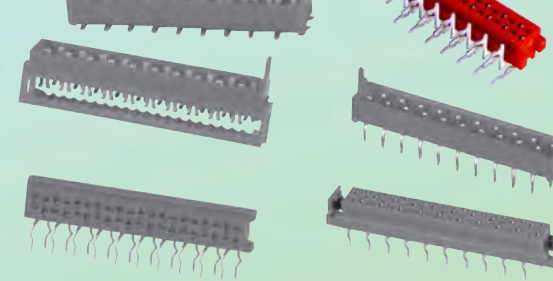
HDMI & MINI HDMI SERIES

- Standard or Mini types, Sturdy, Fully Shielded.
- Eliminates multiple connectors and cables.
- Up to 5Gbps in single interface.
- Thru-hole or SMT mount, Flange mounting option.



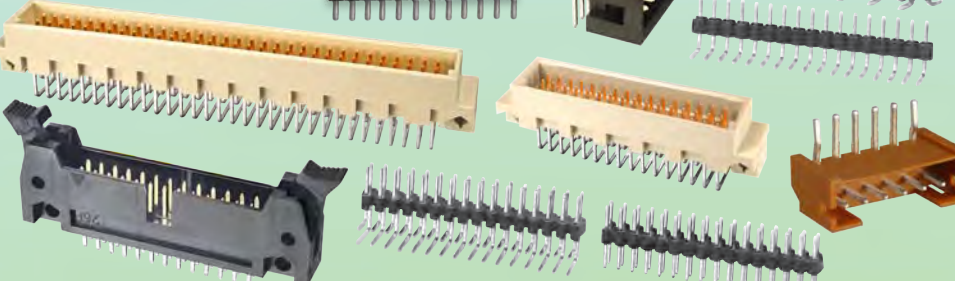
MINI FLEX CONNECTOR

- 1.27 (.050") Pitch
- Cable-PCB, Wire-PCB, PCB-PCB Styles
- Superior design with Location Pegs & Friction Lock Mating



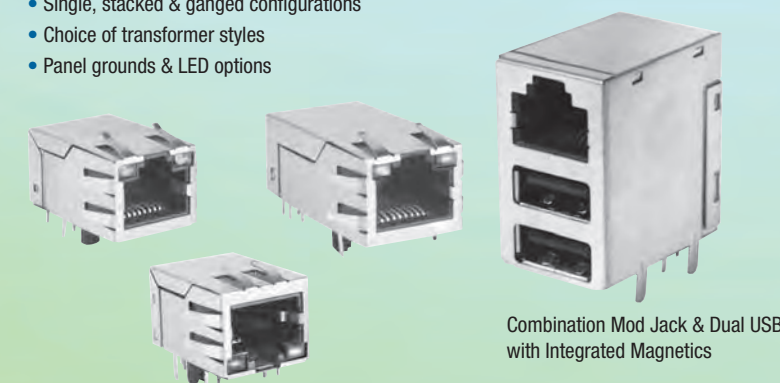
PIN HEADERS & SHROUDED HEADERS

- Many Pitches including:
 - 0.8, 1.0, 1.27, 2.0, 2.54, 3.96mm
- Straight, Right Angle
- Thru-hole & SMT
- Custom pin lengths



MODULAR JACKS WITH INTEGRATED MAGNETICS & LEDS

- Single, stacked & ganged configurations
- Choice of transformer styles
- Panel grounds & LED options



Combination Mod Jack & Dual USB with Integrated Magnetics

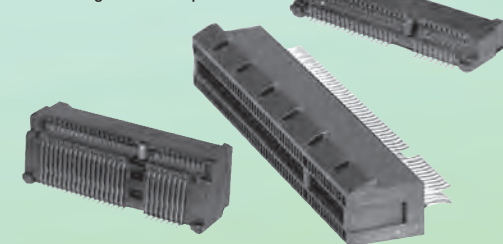
RF CONNECTORS

- Wide selection of cable, panel mount & PCB connectors
- BNC, TNC, FMA, FME, SMA, SMB, N, F PAL, Mini-UHF, MCX, MMCX, W.FL & 1.6/5.6



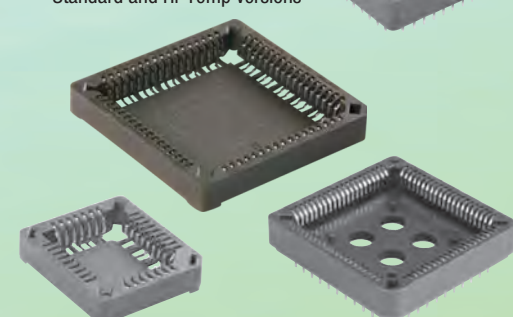
PCI EXPRESS, MINI PCI EXPRESS, MINI PCI, VESA & EISA

- 2.54, 1.27, 1.0 & 0.8mm Pitch
- Standard and Hi density versions
- x1, x4, x8 & x16 Lane configurations
- Coexists with Standard PCI
- Hot Plug & Hot Swap Enabled



PLCC SOCKETS

- Full range 20p – 100p
- Precision Stamped contacts
- Thru-hole and SMT types
- Standard and Hi-Temp versions



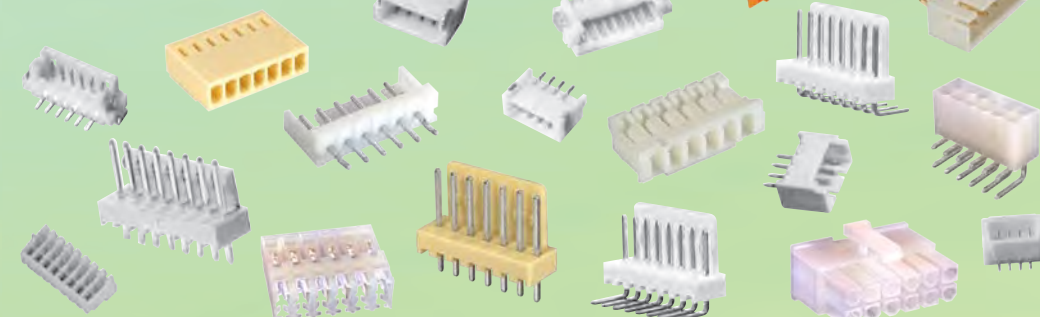
EURO BLOCKS

- Multiple sizes and profiles
- Top, Side and Angled entry
- Two piece pluggable versions
- 3.5, 3.81, 5.0, 5.08, 7.0, 7.62, 10.0, 10.16, 15.0mm Pitches



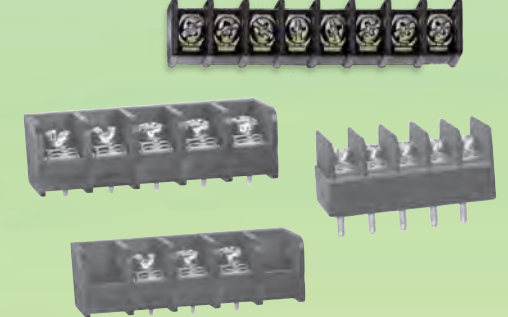
HEADER & HOUSING SYSTEMS

- 0.8, 1.0, 1.25, 1.5, 2.0, 2.5 & 2.54mm Pitches
- Straight, Right Angle and SMT styles
- Sure fit, Fine Pitched & Polarized



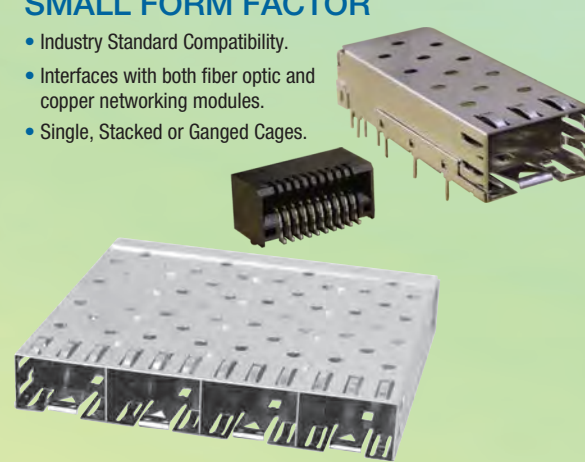
TERMINAL BLOCKS

- Wide range of sizes and profiles
- Choice of multiple terminations
- 02 – 30 positions



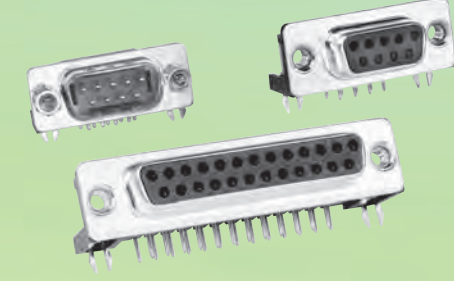
SMALL FORM FACTOR

- Industry Standard Compatibility.
- Interfaces with both fiber optic and copper networking modules.
- Single, Stacked or Ganged Cages.



D-SUBMINIATURE RIGHT ANGLE PCB MOUNT

- Positions: 9, 15, 25, 37, 50
- Compatible with all industry standard D-Subs
- .318" (8.08) & .590" (15.00) Footprints
- Wide assortment of mounting options



D-SUBMINIATURE IDC- FLAT CABLE CONNECTOR

- Positions: 9, 15, 25, 37, 50
- Compatible with all industry standard D-Subs
- Quickly terminates to 1.27 Flat Cable



D-SUBMINIATURE STRAIGHT PCB MOUNT

- Positions: 9, 15, 25, 37, 50
- Compatible with all industry standard D-Subs
- Wide assortment of mounting options



D-SUBMINIATURE DUAL PORT, STACKED RIGHT ANGLE PCB MOUNT

- Positions: 9, 15, 25, 37, 50
- Compatible with all industry standard D-Subs
- Many connector combinations to choose from



HIGH DENSITY D-SUBS

- Positions: 15, 26, 44, 62, 78
- High Density pin count in standard size shell
- Straight, Right Angle, Solder Cup, Crimp/Poke variations



EMI/RFI POWER LINE FILTERS

- Numerous terminations for Chassis or PCB Mount
- Integrated Power Inlet/Outlet
- Power Entry modules available
- Superior Common & differential mode attenuation



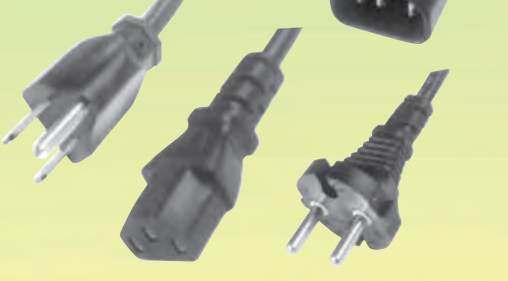
BATTERY HOLDERS, BATTERY SNAPS, MOBILE BATTERY CONNECTORS

- Single and multi package Alkaline battery holders.
- Selection of Lithium Coin cell holders
- PCB Mobile Battery holders.
- Wide selection of 9 Volt battery Snaps.



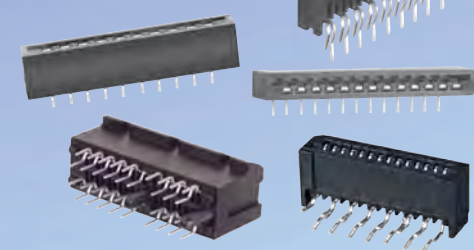
POWER CORDS

- International selection of plugs and cable
- Sturdy High Reliability design
- Worldwide Safety Agency approvals
- Standard and custom power cords



**FLEX CIRCUIT CONNECTOR
– LIF TYPE**

- 0.3, 0.5, 0.8, 1.0 & 1.25mm Pitches.
- LIF and ZIF types.
- Precision Stamped High Pressure contacts.
- Thru-hole or SMT versions.
- 03– 30 Positions



AUDIO JACKS

- Miniature & Sub-Miniature styles
- Broad range of switching configurations
- Ganged and Stacked versions
- PCB or panel mounting types
- Thru-hole or SMT mounting



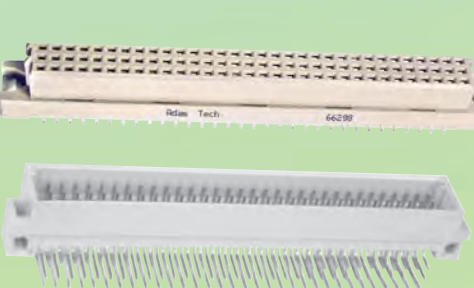
MINI DIN JACKS

- Wide range of styles
- 3 – 13 positions
- Shielded or Unshielded
- PCB mount and Panel mount versions



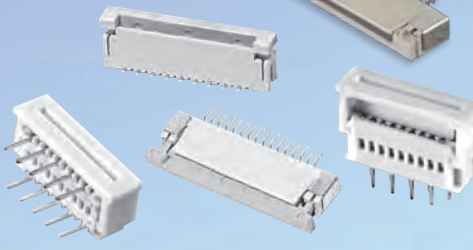
DIN 41612

- Industry standard compatible
- Multiple body sizes and types
- 16 – 96 positions
- 2, 3 & 4 Row styles



**FLEX CIRCUIT CONNECTOR
– ZIF TYPE**

- 0.3, 0.5, 0.8, 1.0 & 1.25mm Pitches.
- LIF and ZIF types.
- Precision Stamped High Pressure contacts.
- Thru-hole or SMT versions.
- 03– 30 Positions



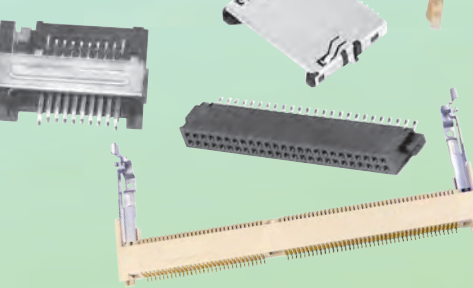
RCA JACKS

- Wide range of body styles
- Ganged and Stacked versions
- Industry standard compatibility



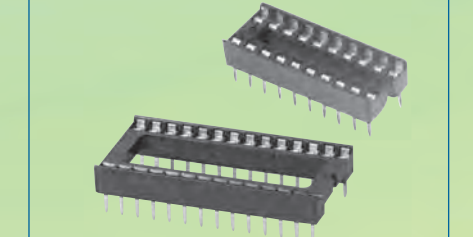
MEMORY CONNECTORS

- Memory Sticks
- Smart Media
- Compact Flash
- Secure Digital
- PCMCIA



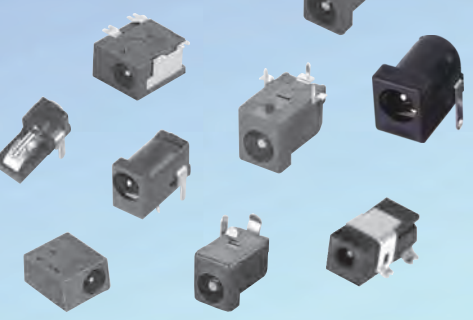
IC SOCKETS

- High Pressure contact system
- 7.62 (.300") or 15.24 (.600") Centerline Footprint
- 06P – 48P Positions
- Anti-Solder Wicking, Machine insertable



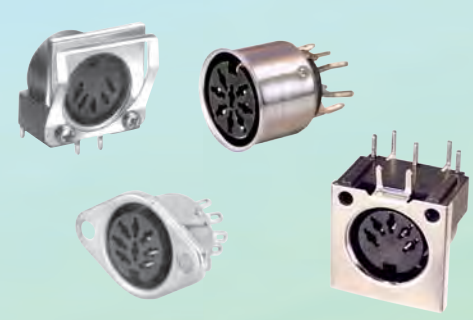
DC POWER JACKS

- Miniature & Sub-Miniature.
- PCB and panel mounting versions.
- Wide range of center pin sizes.
- Thru-hole or SMT mounting.



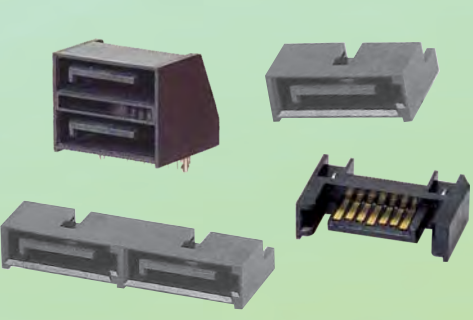
DIN JACKS

- Wide range of styles
- 3 – 13 positions
- Shielded or Unshielded
- PCB mount and Panel mount versions



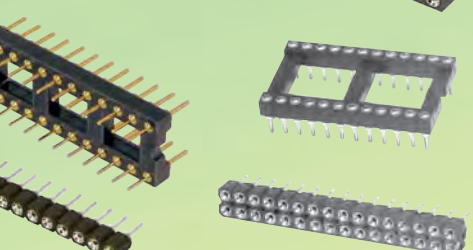
SATA SERIES

- Meets SCA Interconnection Standards.
- Hot Plug capability with power and signal contacts.
- Single and top/bottom or side/side ports.
- Shielded, Open Frame, Thru-hole & SMT styles.



SCREW MACHINE SOCKETS & TERMINAL STRIPS

- 1.0, 1.27, 2.0 & 2.54mm Pitches
- High Pressure Contacts
- Single or Dual Row
- Straight, Right Angle and SMT mounting



ADAM TECH

Adam Technologies, Inc.
ADVANCED INTERCONNECT PRODUCTS AND SYSTEMS
CHINA • TAIWAN • USA • DEUTSCHLAND

USA: Sales, Marketing & Engineering
Corporate Office
Adam Technologies, Inc.
909 Rahway Ave, Union, NJ 07083 USA
Tel. 908-687-5000 • Fax. 908-687-5710
Email: info@adam-tech.com • www.adam-tech.com

Taiwan: Factory, Sales & Marketing
Adam Tech Asia, Ltd.
5F-17, No.14, Lane 609, Sec. 5, Chongsin Rd.
Sanchong City, Taipei County 241, Taiwan (R.O.C.)
Tel. 886-2 2999 8028 • Fax. 886-2 2999 8062
Email: sales@adam-tech.com • www.adam-tech.com.tw

Represented By:
Larry Kozlowski
ESE, Inc.
2214 Hyde Park Way, Duluth, GA 30097
Ph: 6678-910-5739 Email: larrykoz@eseww.com

Adam Tech is pleased to provide you with our 2010 brochure in our 23rd year of business.

It is our continuing goal to offer a wide range of connectors and cable assemblies from our Taiwan and China manufacturing facilities with one simple promise: We will provide you with the **Highest Quality Product** with the **Best Service Available** at the **Lowest Possible Price**

info@adam-tech.com
www.adam-tech.com

ADAM TECH

Adam Technologies, Inc.

ADVANCED INTERCONNECT PRODUCTS AND SYSTEMS
CHINA • TAIWAN • USA • DEUTSCHLAND

2010

info@adam-tech.com
www.adam-tech.com

HDMI
HIGH DEFINITION MULTIMEDIA INTERFACE

UL

SP

DE

HI-SPEED
USB

FC

ID

China RoHS

Pb
RoHS
2006 / W / EC

ISO 9001 : 2000
REGISTERED